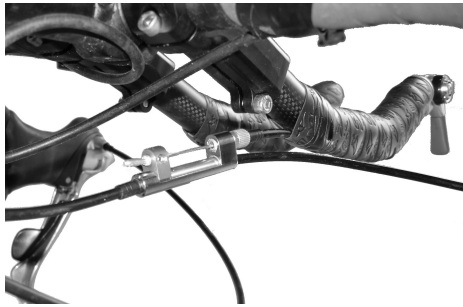


Jtek Engineering Inc

DoubleControl L

Dual input shift control unit Model-L for use with bicycle shifters



Jtek Engineering Inc
5965 138 St N.
Hugo, MN 55038
www.jtekengineering.com
Phone: 651-340-9770

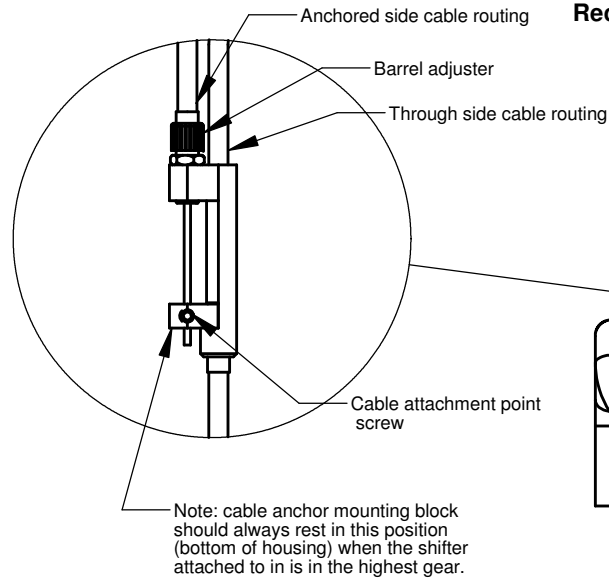
The **DoubleControl L** is a dual input shifting controller designed to allow the use of two shifters in combination with a single bicycle drivetrain. The **DoubleControl L** operates by allowing the use of a primary and secondary shifter lever input. The primary cable routes through the DoubleControl L housing and functions like a normal shift lever to operate the drivetrain. The secondary shift input routes to the DoubleControl L and attaches to the cable attachment point. When the secondary shift lever is actuated, it causes the DoubleControl L to expand the cable housing and thereby shift the drivetrain.

Installation: It is highly recommended that installation be performed by qualified personnel knowledgeable with bicycle service and familiar with bicycle shifting systems and adjustments. Installation will most often require the use of additional cable housing, new shift cables, and cable housing end caps. Make sure supplies are available prior to installation.

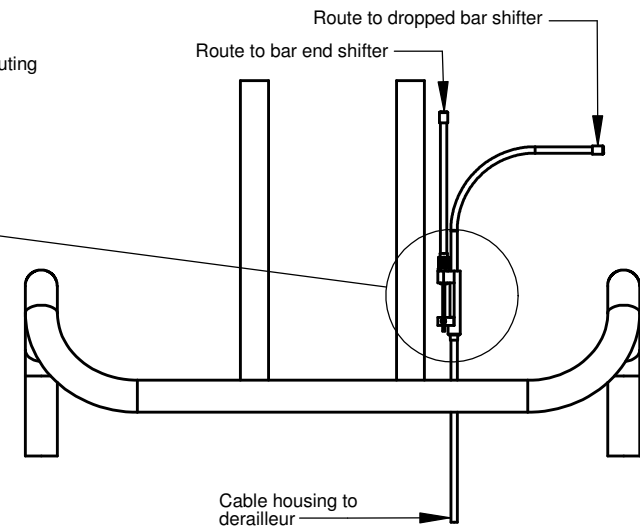
Location: The **DoubleControl L** will need to be mounted in a location where there is a minimum of 20cm (8 inches) of free cable housing that is free to expand slightly in length.

Maintenance: Lubrication is normally not necessary, but may be helpful if stickiness is noticed. A small dab of grease on the inner shaft is all that is needed. Wiping away excess lubrication is recommended to avoid the collection of debris.

Warning: It is important that you understand the operation of this device and the effects on your bicycle shifting system. Make sure you take the time and are careful to learn any changes in handling characteristics new riding positions may have on your bicycle. Improper use or adjustment, may lead to loss of control and severe injury.



Recommended Shimano brand shifter cable routing



NOTE: It is important to understand that the barrel adjuster screw is only for taking slack out of the cable that routes through it. It is not for tuning the shifting system. Shifter tuning is done at the derailleur as on a normal system and will effect both shifters. If the cable attachment point block is raised within the DoubleControl L housing when the shifter routed to it is in it's highest gear, the adjuster barrel is adjusted out too far. (see note)

Recommended Campagnolo brand shifter cable routing

